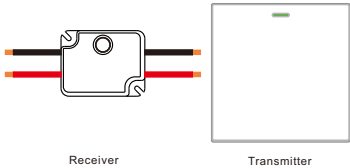


User Manual

Self-powered wireless wall switch

Model: AS 6S

CE approved



Operation instruction

Important

1. Do not get the receiver wet.
2. Do not disassemble, repair or modify.
3. Please screw securely.
4. Do not exceed the electrical ratings.
5. One-way circuit only.
6. Rocker switch.

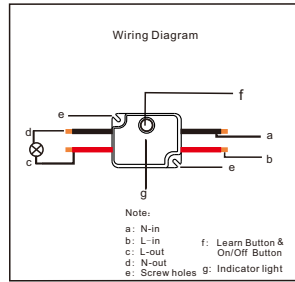
Pack contents

Receiver x 1, Remote transmitter x1, Adhesive pad x2,
User Manual x1, Wire Connector x 2, Screws x 2pairs

Installation Instructions

Note:

1. Please confirm that you have turned off the power before removing or changing the switches.
2. The metallic wall plate will decrease the operating range.
3. Avoid locating the transmitter on or near metallic surfaces as this may reduce the operation range.
4. Press the transmitter on different positions where you want to install, check whether the light can well work.
5. After install the switch, it is in standby mode. Press the transmitter once, it will start to work.

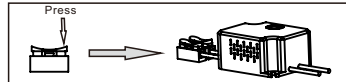


1) Receiver

Turn off the power. Use connector to connect the four lines with the receiver according to the above Wiring Diagram.

Note:

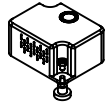
It is much easier to connect or separate the lines with connector by pressing the button.



Two ways for your choice to fix the receiver:

a. With screws

Fix the receiver by insert magnetic nuts and screws.

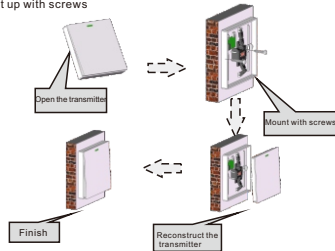


b. With adhesive pad

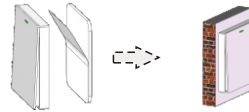
Tear off one side of adhesive pad and stick on the back of receiver, use the other side to stick on the desired position about 30 seconds for firm fixing.

2) Transmitter

a. Set up with screws



b. Mount the transmitter with adhesive pad and press it onto the desired position for about 30 seconds.



Operating instruction

1)Work mode

The receiver has been paired to the transmitter before they left factory.
After installation, the transmitter and receiver are ready to work.

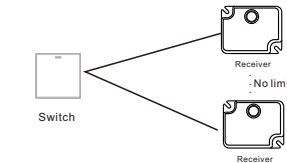
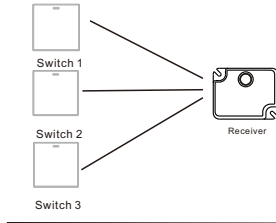
2)Learn mode(paired receiver with transmitter)

The remote transmitter has been paired to the receiver at factory. Unless you need to add additional receivers or transmitters, you do not need to re-pair it.

1. Long press the round button on the receiver for 5 seconds until the indicator light flash, the receiver will enter the learn mode.
2. Press the transmitter twice in one minutes, the indicator light will flash to confirm that transmitter has been paired to receiver. If not, repeat the first step.
3. Will exit the learn Mode automatically if no operation within 1 minute or short press button once.

Note:

Maximum of 3 transmitters can be learnt to a single receiver.
No limit to the number of receivers.



Specification

AS 6S	Receiver	Transmitter
Power Supply	AC 100V~260V (50/60HZ) 10A Max	Self-powered
Operating Temperature	-10℃~+50℃	-40℃~+60℃
Range (Open Field)	70m	
RF Frequency	433MHz	
Power Consumption	<700mW	-
Load power	1000W	-
Operating Force	-	650g
Dimensions	52*40*25.5 mm	86*86*15 mm
Weight	38 g	74 g

Trouble shooting

No reacting when press the transmitter	<ol style="list-style-type: none"> 1. Confirm that the power is "on" 2. Make sure that the transmitter has been paired to the receiver 3. Make sure the receiver has been well connected by the connector.
The light keep blinking	Please check whether the Neutral wire and Live wire have connected to the right port.

This marking indicates that this product should not be disposed with other household wastes throughout the EU. To prevent possible harm to the environment or human health from uncontrolled waste disposal, recycle it responsibly to promote the sustainable reuse of material resources. To return your used device, please use the return and collection systems or contact the retailer where the product was purchased. They can take this product for environmental safe recycling.

Attention:

Resistive load: 1000W Max
Inductive load: 200W Max